

Quick Start Guide

DREAMER

SZ01-EN-A02

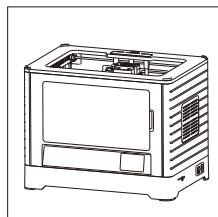
WARNING

1. Do not remove the wrapping around the nozzle.
2. Hot! Avoid touching the heating nozzle in operation.
3. Moving parts in printer may cause injury. Do not wear gloves or other sources of entanglement in operation.

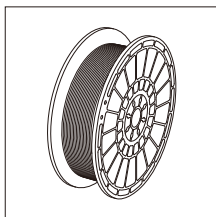
USER GUIDE

The User Guide is in the SD card.

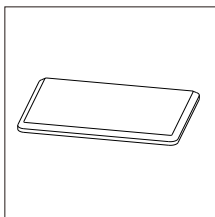
Kit Contents



3D Printer



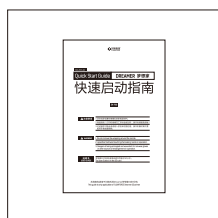
Filament Spool x 2



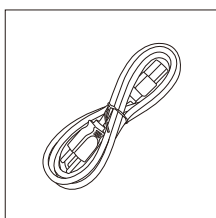
Lid



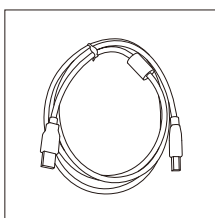
After-sales Service Card



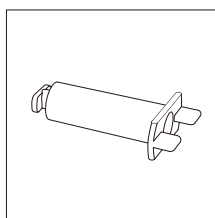
Quick Start Guide



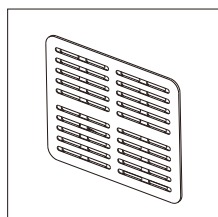
Power Cable



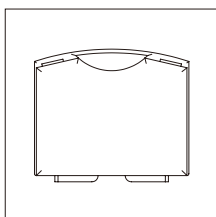
USB Cable



Spool Holder x 2



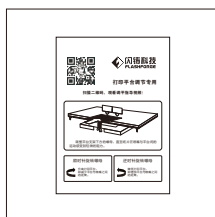
Side Panel x 2



Tool Box



Build Tape x 2



Leveling Card



Extruder's
Accessory Kit

Tool Box Contents:

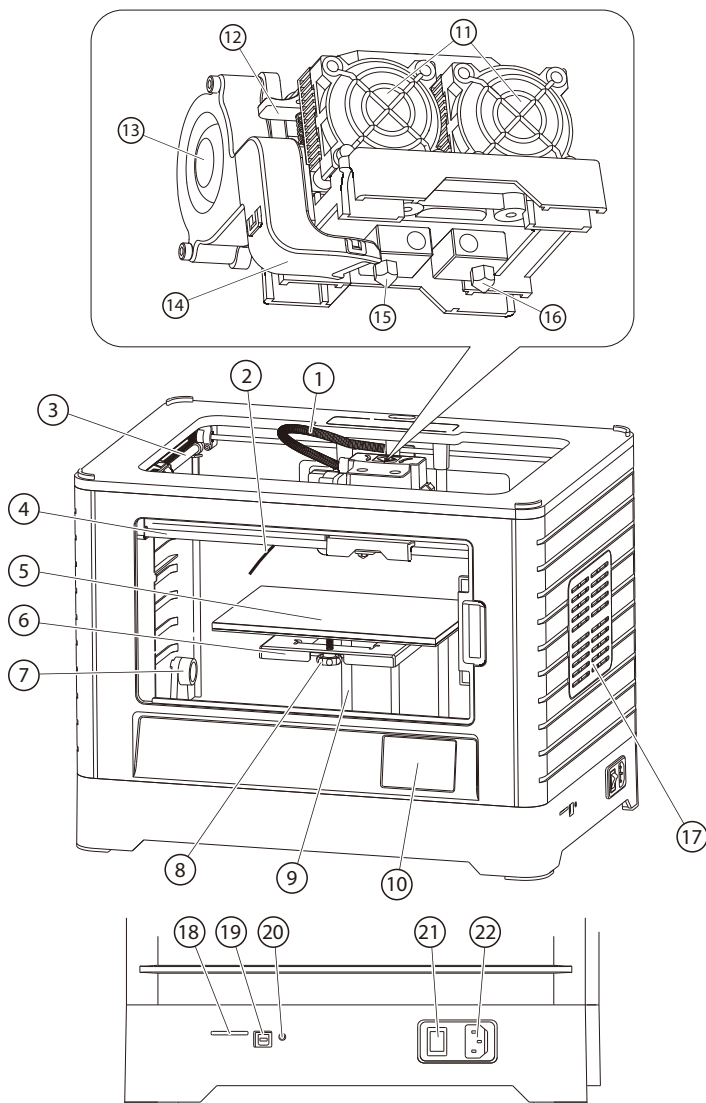
SD Card / Tweezer / Graver / Scraper / Screw Box* / Wrench / Grease
Allen Wrench / Phillips Screwdriver / Wrench / Unclogging Pin Tool

*Screw Box Contents: PTFE tube, Screws, Leveling Knob

Extruder's Accessory Kit Contents:

M3 x 8 Bolt x 2 / M3 x 6 Bolt / Turbofan Baffle

Getting to Know Your Dreamer

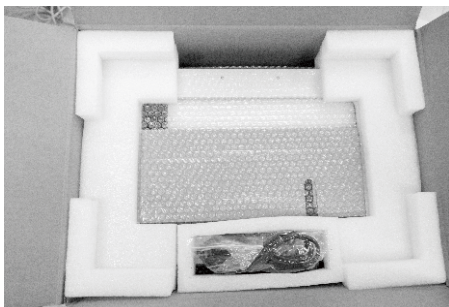


- | | | | |
|------------------------|-----------------------|--------------------|--------------------|
| 1.Extruder Cable Bunch | 2.Filament Guide Tube | 3.Y-Axis Guide Rod | 4.X-Axis Guide Rod |
| 5.Build Plate | 6.Build Platform | 7.Bracket | 8.Leveling Knob |
| 9.Z-Axis Guide Rod | 10.Touch Screen | 11.Cooling Fan | 12.Spring Presser |
| 13.Turbofan | 14.Turbofan Baffle | 15.Left Nozzle | 15.Right Nozzle |
| 17.Side Panel | 18.SD Card Slot | 19.USB Input | 20.Reset Button |
| 21.Power Switch | 22.Power Input | | |

Unpacking



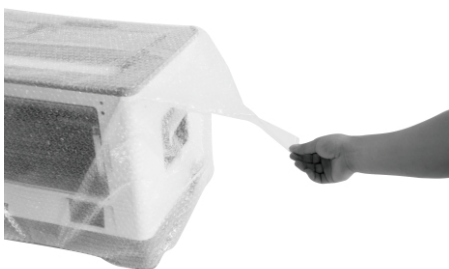
1. Open box and remove bag containing the lid, Quick start guide, After-sales service card, levelling card, and two build tapes.



2. Take the power cable and two top foam sheets out.



3. Firmly grasp the two sides handles of Dreamer. Lift it out from the carton and place it on a stable surface. Then you will see the Toolbox and USB cable in the shipping box.



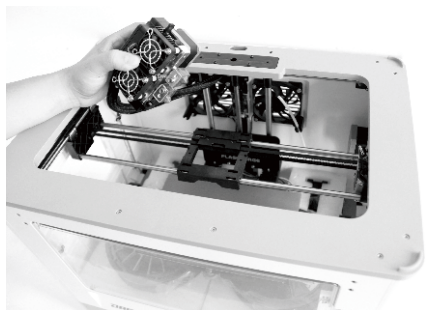
4. Remove the packing bag. (Tip: Save your packaging for future transportation and storage.)



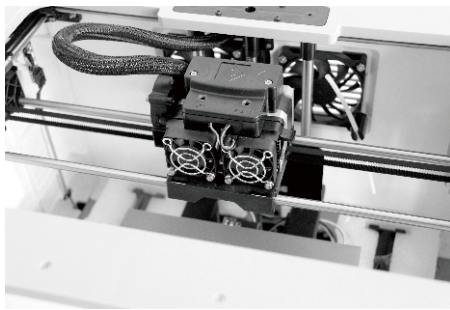
5. Take foam out of the dreamer.



6. Open box. Box includes dual extruder, side panel x 2, extruder's accessory kit. Take the dual extruder out and place it onto a clean surface. Notes: Extruder cable bunch is short. Please do not leave the extruder hanging by the cable.



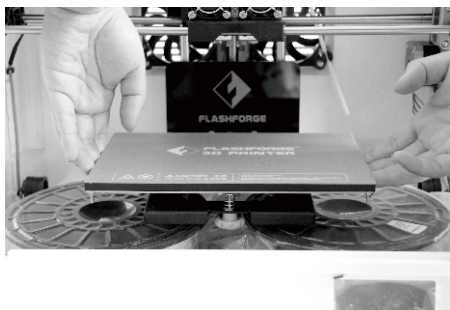
7. Remove the bubble wrap from extruder and slide the X-axis rods to the middle of printer (A extruder seat on the X-axis).



8. Place the dual extruder on the extruder seat, as shown.



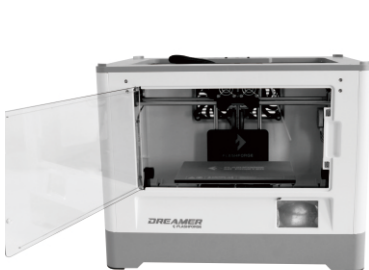
9. Remove the foam from the back of the logo board.



10. Elevate the build plate to its limit. Notes: Do not let build plate touch the extruder.



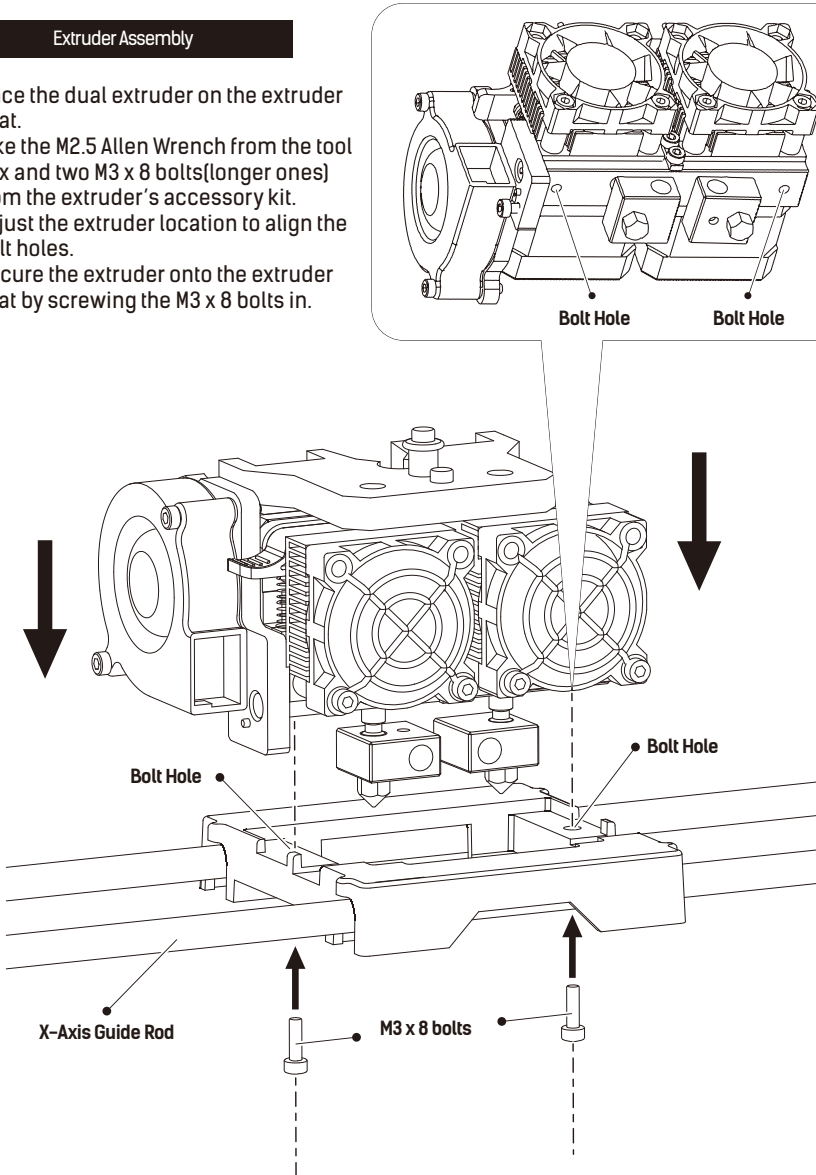
11. Remove both filament rolls and foam pieces from printer.
Note: Take both spool holders out of the foam.



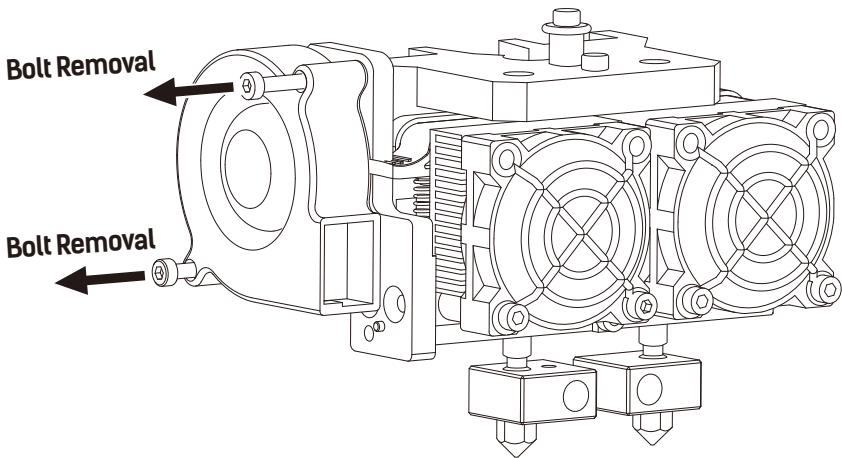
12. Lower the build plate fully. Congratulations! You've unpacked your printer. (Tip: Save packaging for future transportation and storage)

Extruder Assembly

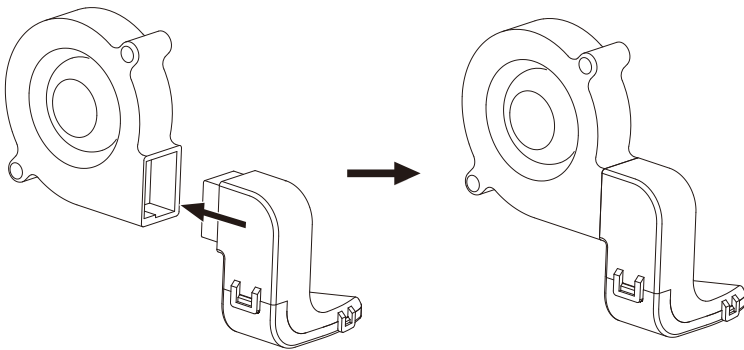
1. Place the dual extruder on the extruder seat.
2. Take the M2.5 Allen Wrench from the tool box and two M3 x 8 bolts(longer ones) from the extruder's accessory kit.
3. Adjust the extruder location to align the bolt holes.
4. Secure the extruder onto the extruder seat by screwing the M3 x 8 bolts in.



Turbofan Baffle Assembly

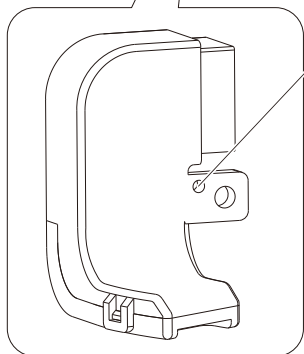
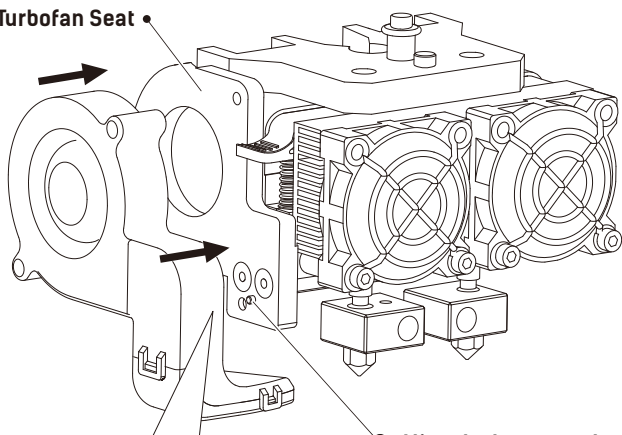


1. Use the M2.5 Allen Wrench to remove two turbofan bolts.



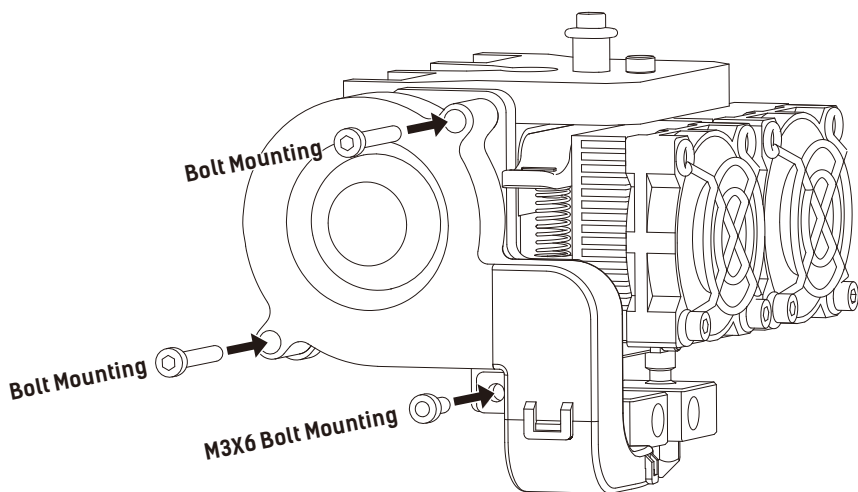
2. Take the turbofan baffle from the extruder's accessory kit.
3. Install the turbofan baffle to the turbofan.

Turbofan Seat •



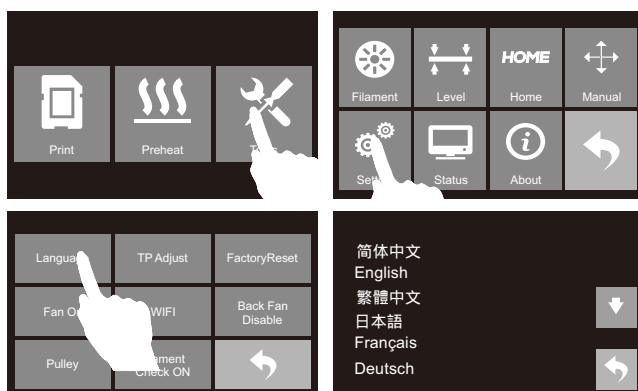
• **Align the bump on the turbofan seat to the hole in turbofan sub-assembly.**

1. Place the turbofan sub-assembly besides the turbofan seat.
2. Insert the bump on the turbofan seat to the turbofan sub-assembly.
3. Screw the two bolts in.
4. Take a M3 x 6 bolt from the extruder's accessory kit and complete installation according to the instruction below.

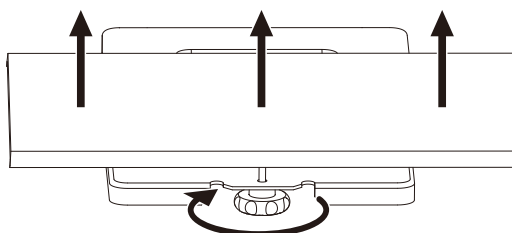


Leveling Build Platform

How to change language

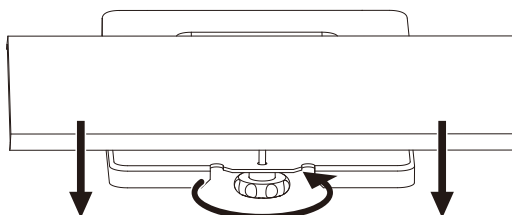


How to use the leveling knobs



Rotate knob clockwise

Raise the build plate to reduce the distance between the nozzle and build plate.

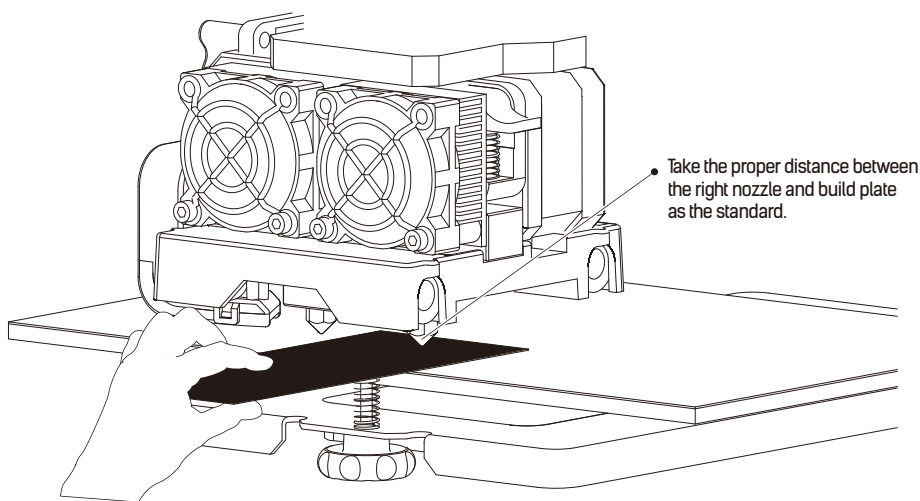


Rotate knob anticlockwise

Lower the build plate to increase the distance between the nozzle and build plate.

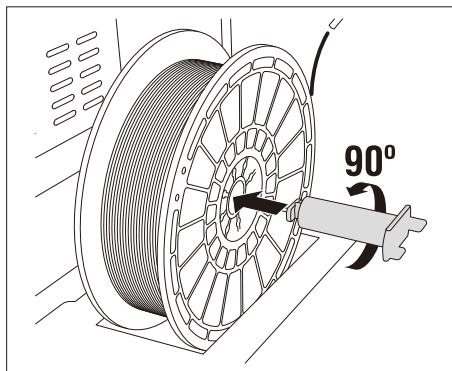
How to level the build plate

1. Tighten the three leveling knobs under the build platform until you cannot tighten them any more.
2. Tap [Tools], [Leveling] to start leveling.
3. The build plate and the nozzle start moving, once they suspend, you need to adjust the corresponding knob under the right nozzle.
4. The leveling card should slide between the nozzle and build plate with some friction/resistance. If the card slides through easily, the nozzle and build plate are too far apart. Rotate the knob clockwise to decrease the distance between them. If the card cannot slide through, rotate the knob anticlockwise.
5. After leveling the first point, tap [OK] to continue to the next point.
6. After adjusting the three knobs and making a check when the nozzle is at the center of the plate, you finish the build plate leveling.

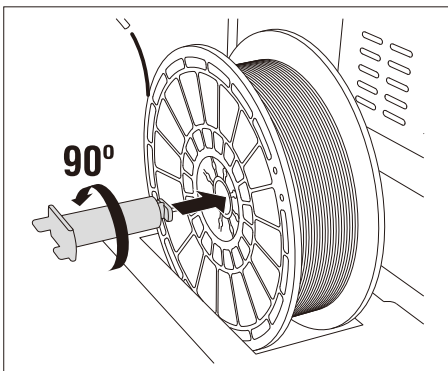


Place Filament and Loading Filament

1. Remove PLA filament from packaging.
2. Place filament in spool slots located on both sides of the printer.
3. As shown below, insert spool holder into the center hole of the filament. Rotate 90 degrees to lock. To remove spool holder, rotate in the opposite direction.

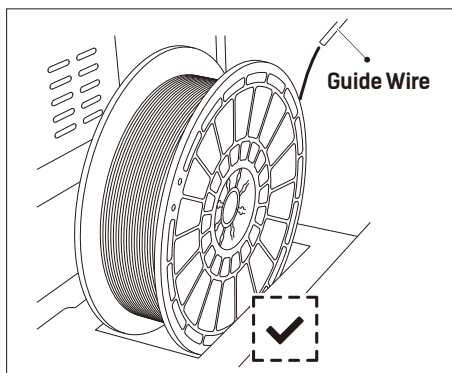


Fixed the filament by left spool holder

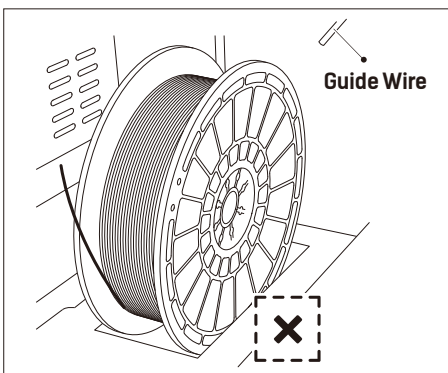


Fixed the filament by right spool holder

Ensure filament is placed in spool slots with correct orientation.

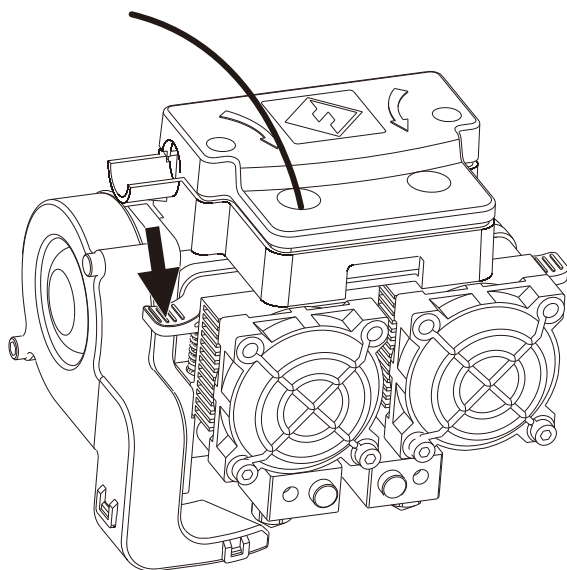
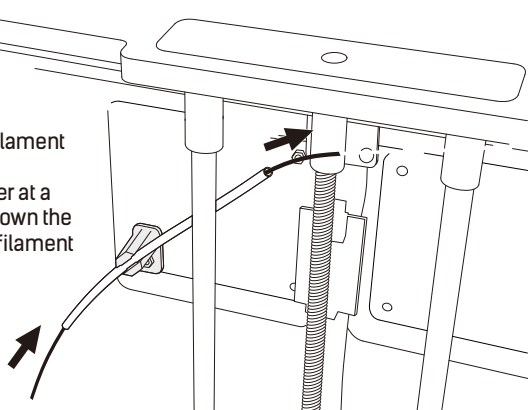


Correct Direction



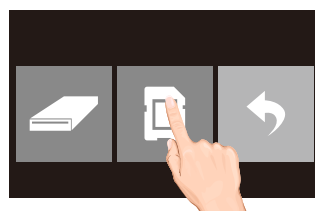
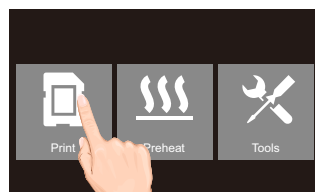
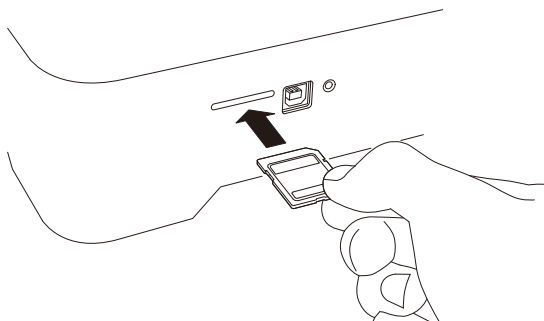
Wrong Direction

1. After filament placement, thread the filament through guide tube.
2. Insert the filament into the left extruder at a perpendicular angle while pressing down the spring presser. Ensure the end of the filament has a flat surface before loading it.

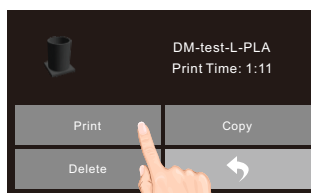
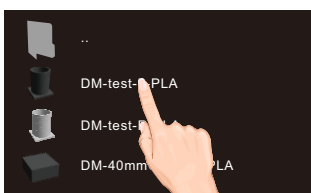
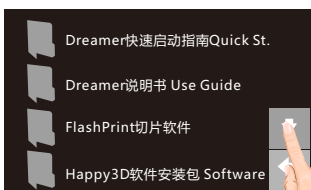


1. Tap [Tools], then tap [Filament].
2. Tap [Load Left].
3. Wait for the extruder to reach operating temperature. An alert will indicate this.
4. Secure the filament with a flat cross-section and load it by inserting the filament into the extruder at an upright angle, meanwhile press down the spring presser.
5. Filament will flow out of the nozzle. Continue loading until the filament is extruded in a straight line.

First Print



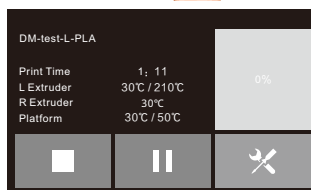
1. Insert SD card into SD card slot which on the right side of printer.
2. Tap [Print]–[SD card], turn to next page, tap [Test Files], select the file [DM-test-L-PLA], then tap [print]. Once heated, the printer will start printing automatically.



Notes

The model file in SD card has been set, it can be printed directly.

The "L" after the filename represent using Left extruder to print, "R" represent using right extruder to print.





You**Tube**

Scan QR to Get More
After-Sales Support



浙江闪铸三维科技有限公司
FLASHFORGE CORPORATION

After-Sales Service: support@ff3dp.com

Amazon.com orders only: 597891915@qq.com

Tel: +86 579 82273989 Web: www.flashforge.com Add: 2/F, No.518, Xianyuan Road, Jinhua, Zhejiang, China